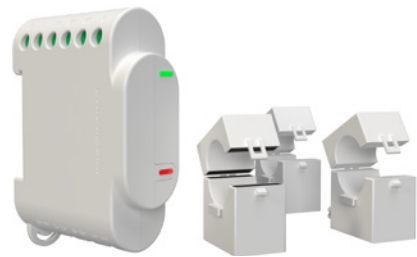


# Shelly® 3EM



- ✓ Precise 3-phase energy metering
- ✓ Up to 120A per phase
- ✓ Integrated 10A contactor control
- ✓ Solar and Wind power compatible
- ✓ Factory calibrated with over 99% accuracy
- ✓ DIN mountable
- ✓ Wi-Fi enabled
- ✓ Cloud and MQTT Enabled
- ✓ 365 days power consumption history
- ✓ Anti energy theft protection



### Wi-Fi connected

Shelly 3EM can be connected to any Wi-Fi network or can operate as an Access Point.



### Power supply

Each phase of Shelly 3EM must be 110-230V ±10, 50/60Hz AC.



### Monophase systems

Shelly 3EM can also monitor monophase electrical systems with up to 3 points simultaneously.



### Contactor control

Shelly 3EM has an integrated 10A relay output for contactor control.



### Mobile app control

Turn Shelly 3EM on/off directly from your smartphone or tablet. You can manage Shelly 3EM's output from the Shelly Cloud app, MQTT or Rest API.



### Overconsumption and overpower protection

Shelly 3EM can automatically turn off the whole circuit if consumption or energy (pre-paid energy option) reaches the set limit.



### Embedded web server

Turn on/off Shelly 3EM's contactor output directly, without the need of any additional controller or hub.



### Sunrise/sunset schedules

Shelly 3EM can automatically turn on/off the power based on the sunrise/sunset hours.



### Weekly schedules

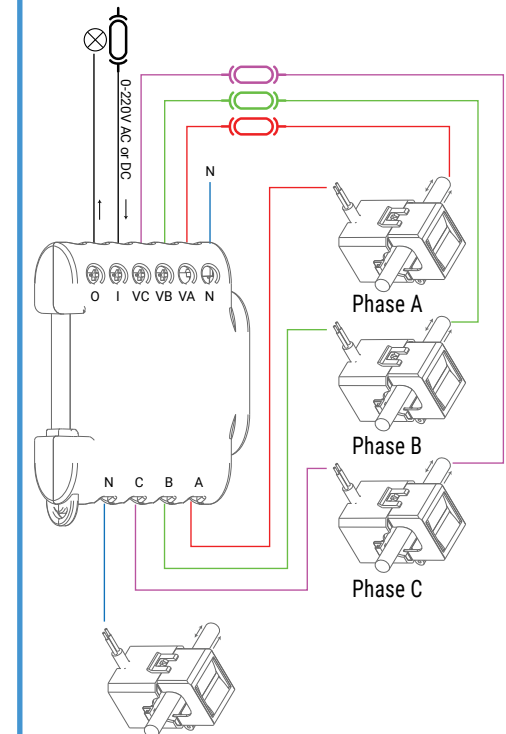
Choose a time and create custom daily schedules for your Shelly 3EM.

## PROFESSIONAL 3-PHASE ENERGY METER

Shelly 3EM has integrated relay output which can be used for contactor control.

### TECHNICAL SPECIFICATIONS

<b>Power supply</b>	110-230V ±10, 50/60Hz AC
<b>Power metering</b>	3 channels, up to 12A each
<b>Consumption history</b>	365 days built-in energy history (Wh)
<b>Contactor control</b>	Maximum load 10A
<b>Complies with EU standards</b>	<ul style="list-style-type: none"> <li>• RE Directive 2014/53/EU</li> <li>• LVD 2014/35/EU</li> <li>• EMC 2004/108/WE</li> <li>• RoHS2 2011/65/UE</li> </ul>
<b>Working temperature</b>	-40°F ÷ 104°F
<b>Radio signal power</b>	1mW
<b>Wireless/WiFi Protocol</b>	802.11 b/g/n (2.4 GHz)
<b>Frequency</b>	2400 - 2484 MHz
<b>Operational range (depending on local construction)</b>	<ul style="list-style-type: none"> <li>• up to 165 feet outdoors</li> <li>• up to 100 feet indoors</li> </ul>
<b>Dimensions (HxWxL)</b>	2.87x2.24x.86 in
<b>Electrical consumption</b>	< 1 W
<b>Additional features</b>	<ul style="list-style-type: none"> <li>• Overpower shutdown</li> <li>• Consumption limit</li> </ul>



Phase N - optional and allows for detect theft or energy leakage.